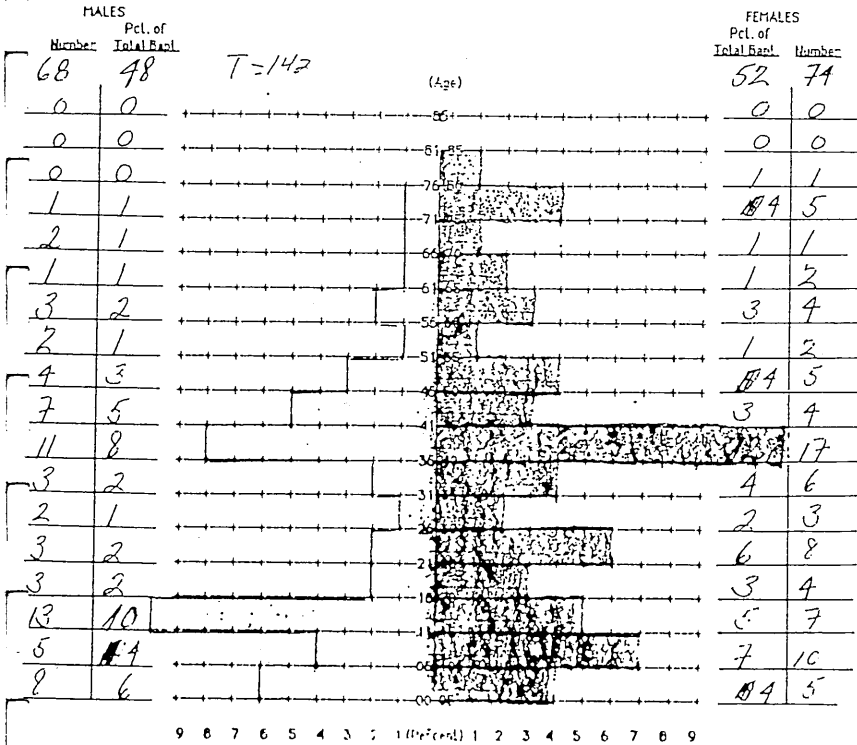


COMMUNITY LUTHERAN CHURCH

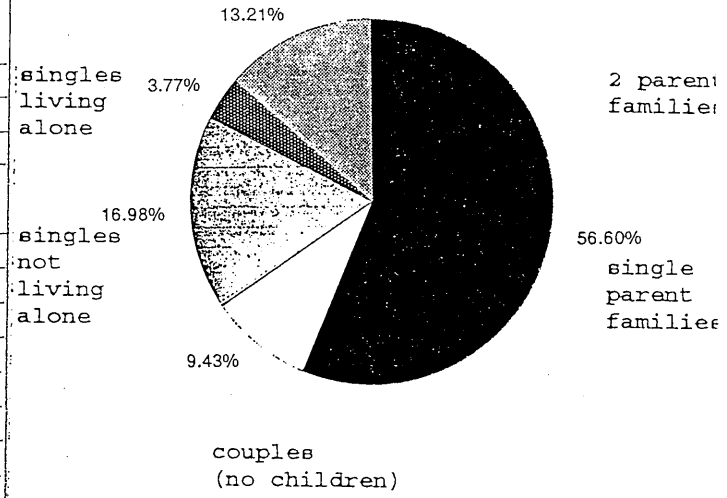
SAN JOSE

ORGANIZED 1973

AGE-SEX PYRAMID

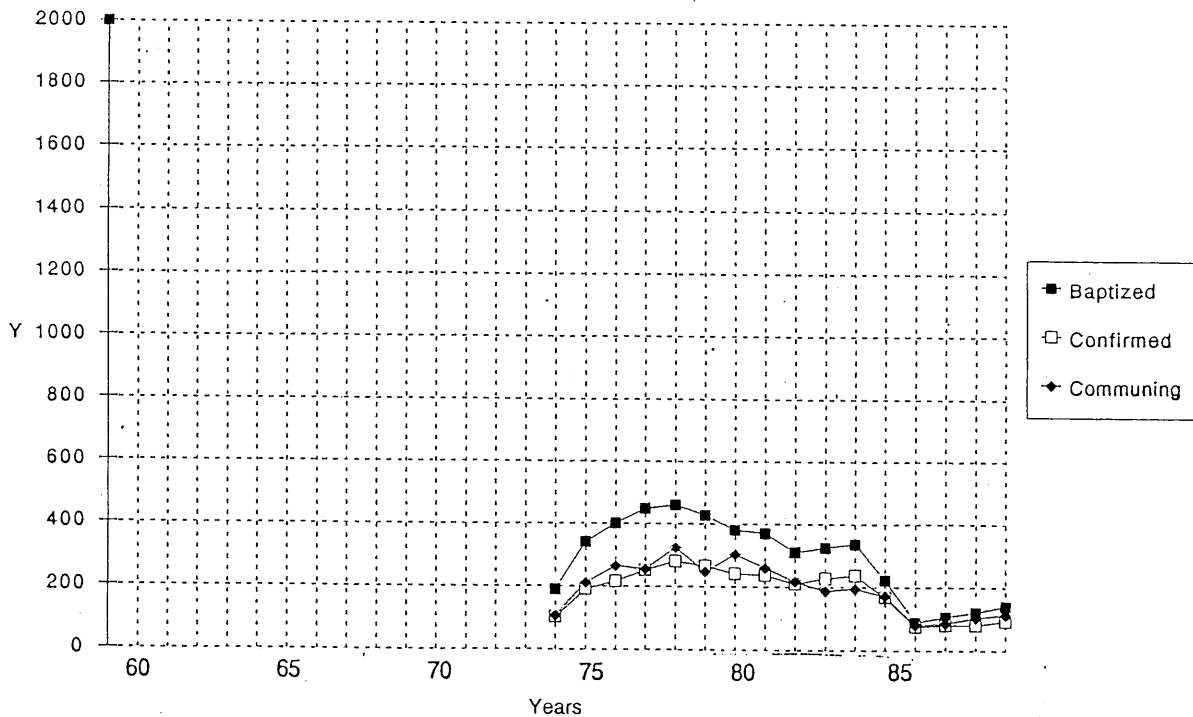


MAKE-UP OF HOUSEHOLDS



30 MEMBERSHIP TREND (based on available information)

Community, San Jose



SPECIAL MINISTRIES/ACTIVITIES/PROGRAMS/COMMITMENTS OF YOUR CONGREGATION

At the Present Time	Changes in past 10 years	Changes anticipated in 5-10 years
Ecumenical endeavors, use of facilities for community ministry	Resolution of long term, deep rooted conflict	Continued growth and community ministry, potential for growth is evident

SPECIAL COMMUNITY NEEDS AND HUMAN NEEDS WITHIN THE BOUNDARIES OF YOUR CONGREGATION

At the Present time	Changes in past 10 years	Changes anticipate in 5-10 years
Growing area of San Jose with many young families with children, several single parent households	Development of the area	The development of Coyote Valley will impact growth of congregation