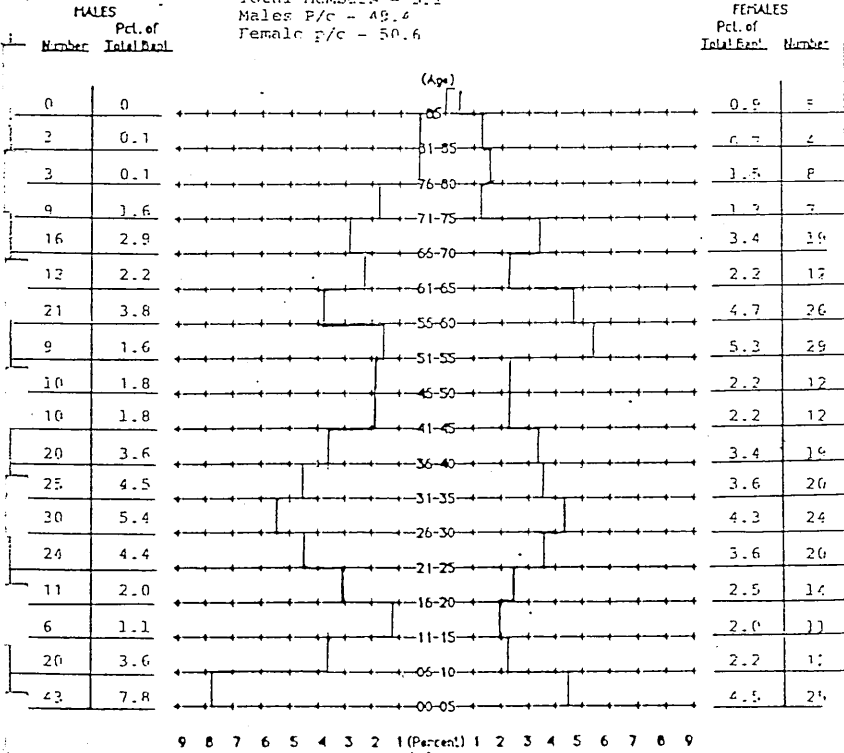


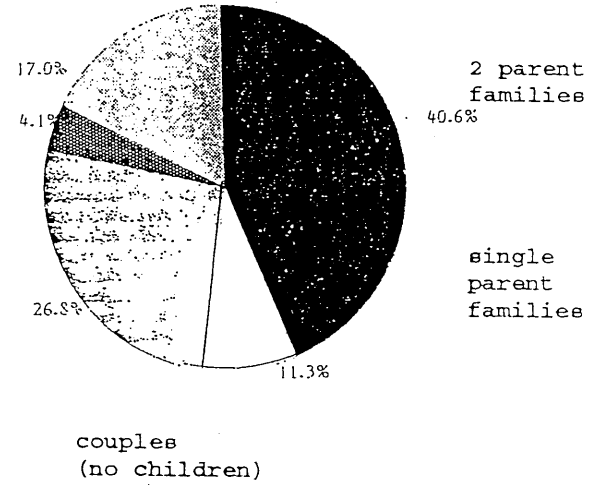
HOPE LUTHERAN CHURCH
SANTA CLARA
ORGANIZED 1957

AGE-SEX PYRAMID

Total Members - 551
Males P/c - 49.4
Female P/c - 50.6

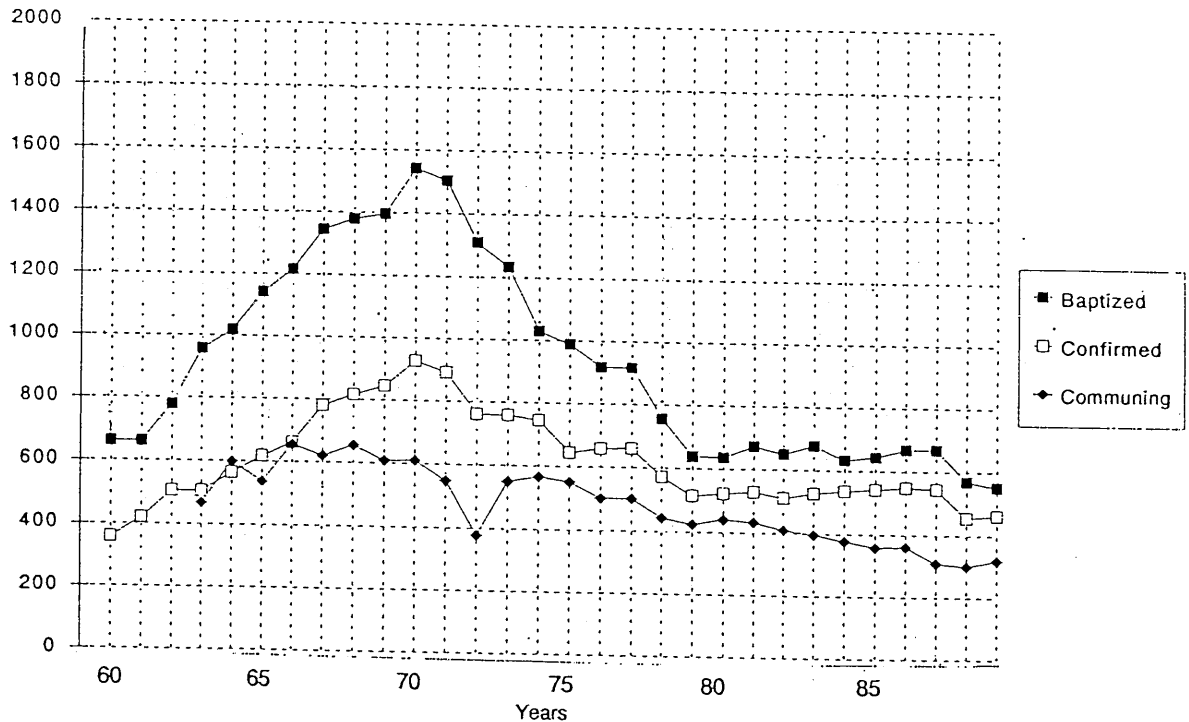


MAKE-UP OF HOUSEHOLDS



30 MEMBERSHIP TREND
(based on available information)

HOPE, SANTA CLARA



Hope, Santa Clara

SPECIAL MINISTRIES/ACTIVITIES/PROGRAMS/COMMITMENTS OF YOUR CONGREGATION

At the Present Time Changes in past 10 years Changes anticipated in 5-10 years

Mission partner with Light of Life Church
Sunny View Lutheran Home
Mt. Cross Bible Camp
California Lutheran University
Lord's Pantry
FISH (Sunnyvale & Santa Clara)
San Jose Family Shelter
ELCA Hunger Appeal
CROP Walk
City Team Ministries
Activities for Youth, Adult, Retired and
Singles

Increased benevolence -- more social
ministry commitments
Movement from 2 clergy to 1 and now back to 2

Outreach to Community
Outreach to Inactive
Caring for Elderly
Master Plan for usage of facilities
(possible building)
Additional Care Groups
Additional Worship
Ministry to area businesses

SPECIAL COMMUNITY NEEDS AND HUMAN NEEDS WITHIN THE BOUNDARIES OF YOUR CONGREGATION

At the Present time Changes in past 10 years Changes anticipate in 5-10 years

Senior citizens
Multi-cultural
Drug abuse
Stress with 2 spouses working
Lethargy because of stress
Singles
Homeless

Senior Citizen Social Group
Singles Ministry
Make facility available to ethnic
group for worship
Support shelter (volunteers, money,
food and clothing)
Support Lord's Pantry (volunteers,
money, food & clothing)

Calling and Caring Community
to address family needs
Senior Day Care (maybe
facility)